



FILTER MEDIUM

DEZHOU XUDA FILTRATION CO., LTD.

Filter the World, Filter the Future!

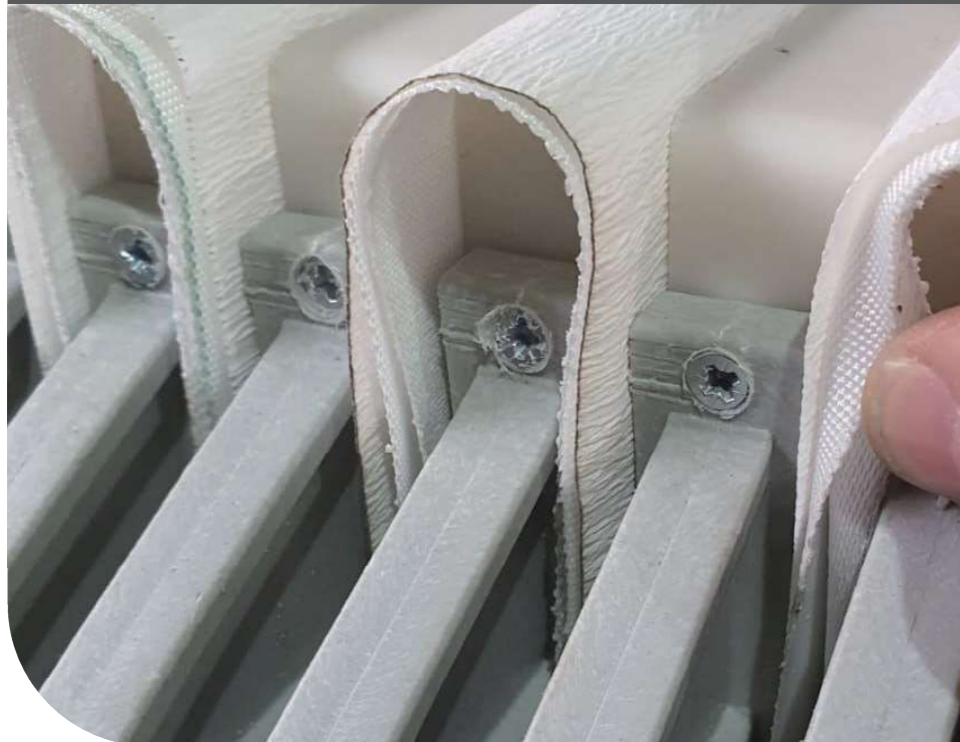
COMPANY PROFILE

Xuda Filtration is subordinate to Dezhou Xuda Enviro-Tech Co., Ltd. It is mainly responsible for developing the major consumable spares for the company, such as filter plate, filter cloth and filter paper.

Based on the characteristics of different applications, we have summarized and developed our product series which conforms to the international design and quality standards. At the same time, to meet the product differentiation requirements of high-end clients, we can also customize following their design or process requirements.

FILTER MEDIUM INTRODUCTION

In a pressure filter or vacuum filter system, filter medium plays the key role in the initial stage of filtration process which helps to reduce maintenance cost, improve filter efficiency and product quality. Filter cloth and filter paper are commonly used filter medium. Based on years of experience and experiment data, Xuda Filtration is able to provide you with the most effective filter medium model selection scheme.



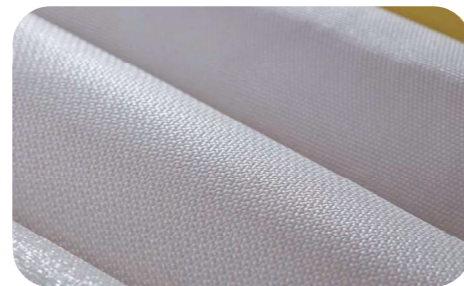


FILTER MEDIUM TYPES

■ Filter Cloth

Filter cloth material can be polypropylene, polyamide and polyester. The commonly used filter cloth widths include: 900mm/1100mm/1350mm/1600mm/1700mm/2100mm/2200mm/2700mm. According to the inter structure, we can roughly divide the types of filter cloth into:

- 01. Multifilament filter cloth
- 02. Monofilament filter cloth
- 03. Mono/Multi filter cloth
- 04. Non-woven fabrics



■ Filter Paper

Filter paper is made of cotton fiber, wood pulp and wet strength agent. The commonly used filter paper widths include: 960mm/1060mm/1260mm.

According to the application characteristics, we can roughly divide the types of filter paper into:

- 01. Support Paperboard
- 02. Fine Filtration Paperboard
- 03. Oil Filter Paper
- 04. Water Filter Paper



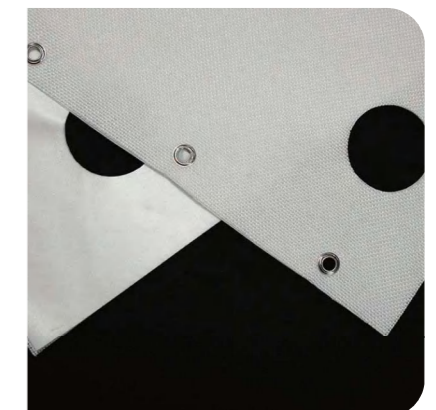
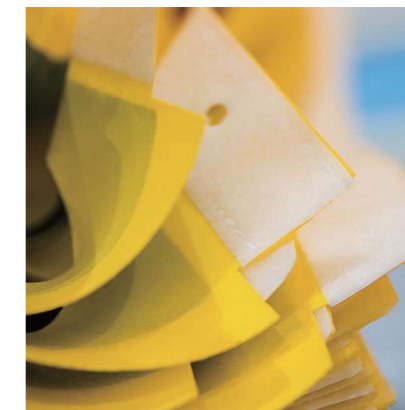
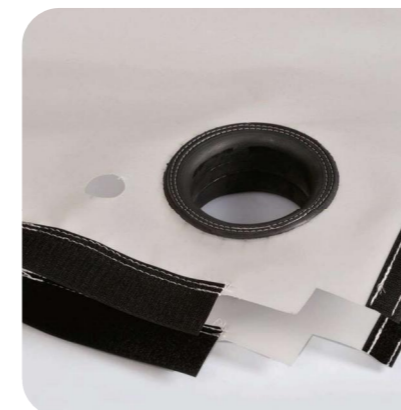
FILTER CLOTH TECHNICAL PARAMETER

NO.	MODEL	WEAVE	WEIGHT	THICKNESS	AIR PERMEABILITY	BREAKING STRENGTH (N/5*20cm)	FILTRATION PRECISION	FILTRATION PRESSURE
			(g/m ²)	(mm)	(L/m ² ·S)	Warp	Weft	(um)
Multifilament Filter Cloth/ 复丝滤布								
1	PP750AB	Plain+Twill	600	1.12	20±5	7900	5400	≤ 5
2	PP750A	Plain	380	0.74	15±5	5100	2900	≤ 5
3	PP750B	Twill	450	0.89	40±10	6500	4300	≤ 10
4	PP108B	Twill	800	1.45	10±2	13000	3500	≤ 3
5	PP1135	Twill	800	1.60	100±20	10000	4000	≤ 25
6	PP1010	Twill	720	1.20	10±2	8000	4000	≤ 3
7	PP108C	Twill	610	1.06	3±1	6500	3500	≤ 1
8	PP7232	Twill	540	0.93	20±5	8900	4000	≤ 5
9	PP4135	Plain	510	1.00	15±5	6900	3800	≤ 5
10	PP521	Twill	310	0.64	100±20	3300	2200	≤ 25
11	PP500	Twill	300	0.59	70±20	3600	2100	≤ 20
12	PT8222	Twill	950	1.50	12±2	9600	4100	≤ 3
13	PT0303	Plain	700	0.72	1±1	10000	1600	≤ 0.5
14	PT621	Plain	410	0.56	10±2	3300	2400	≤ 3
15	PT1207	Twill	630	1.10	20±5	6100	2700	≤ 5
16	PT4030	Plain	600	0.90	5±1	9500	3500	≤ 1
17	PT758	Plain	410	0.60	20±5	5200	3000	≤ 5
18	PA7239	Twill	410	0.67	70±20	5200	2500	≤ 20
19	PA663	Plain	300	0.58	20±5	2400	2200	≤ 5
Monofilament Filter Cloth/ 单丝滤布								
20	PP2520	Satin	620	1.07	250±20	9000	4000	≤ 70
21	PP2525	Satin	540	0.75	100±20	9000	3000	≤ 30
22	PP2015	Twill	470	0.85	100±20	5400	3000	≤ 30
23	PP2530	Satin	430	0.50	150±30	4800	3300	≤ 40
24	PP2020	Satin	390	0.53	70±20	5500	2700	≤ 20
25	PP9706	Satin	360	0.67	100±20	4100	2600	≤ 30
26	PP199S	Satin	350	0.50	100±20	5500	2700	≤ 30
27	PP1722	Twill	330	0.60	100±20	3900	1300	≤ 30
28	PP2025	Satin	310	0.54	350±50	4200	1500	≤ 80
29	PP3030	Twill	300	0.68	3000±300	3700	1700	≤ 200
30	PP2815	Twill	270	0.50	100±20	3300	1700	≤ 30
31	PP6030	Twill	270	0.48	1000±100	3200	1600	≤ 100
32	PA929	Satin	680	1.00	200±20	6000	3000	≤ 60
33	PA1426	Satin	530	0.76	500±50	6000	2400	≤ 80
34	PA1422	Satin	500	0.72	1000±100	4000	1500	≤ 100
35	PA2026	Satin	450	0.58	500±50	4200	3200	≤ 80
36	PA199	Plain	400	0.70	450±50	5900	2600	≤ 75
37	PA532	Plain	360	0.50	1500±200	3700	2600	≤ 120
38	PA120B	Satin	330	0.50	650±50	3400	2100	≤ 85
39	PT1220	Satin	420	0.56	650±50	2600	1200	≤ 85
40	PT21A	Satin	280	0.31	70±20	2700	900	≤ 20

NO.	MODEL	WEAVE	WEIGHT	THICKNESS	AIR PERMEABILITY	BREAKING STRENGTH (N/5*20cm)	FILTRATION PRECISION	FILTRATION PRESSURE
			(g/m ²)	(mm)	(L/m ² ·S)	Warp	Weft	(um)
Mono/Multi Filter Cloth/ 单复丝滤布								
41	PP110B	Twill	820	1.50	20±5	10600	4000	≤ 5
42	PP109B	Twill	700	1.40	70±20	11000	3300	≤ 20
43	PP2625	Satin	550	0.75	20±5	5500	8000	≤ 5
44	PP1282	Twill	550	0.90	15±5	4300	4700	≤ 5
45	PP2610	Satin	480	0.66	15±5	5400	4400	≤ 5
46	PP2080	Satin	430	0.70	80±20	5000	2600	≤ 20
47	PP2370	Satin	410	0.61	100±20	4800	2200	≤ 25
48	PP2570W	Satin	370	0.55	100±20	3700	3000	≤ 25
49	PP2570B	Satin	330	0.50	40±10	3800	2800	≤ 10
Non-woven Filter Cloth / 无纺布								
50	PPN700	PP	700	2.50	40±10	1800	1200	≤ 10
51	PPN800	PP	800	3.00	70±20	2100	1300	≤ 20
52	PPN900	PP	900	3.50	100±20	2500	1500	≤ 30
Backing Filter Cloth / 衬布								
53	PP0101	Plain	190	0.75	4000±400	1900	1800	\
54	PP0202	Plain	250	0.90	2300±300	2200	2000	\
55	PP0303	Twill	400	1.20	1500±200	4200	2800	\
56	PP0404	Plain	420	1.30	1600±200	4000	3700	\

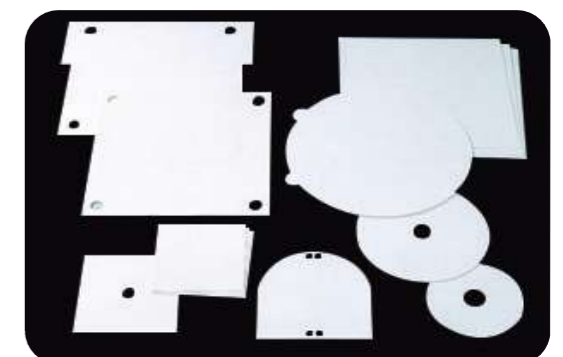
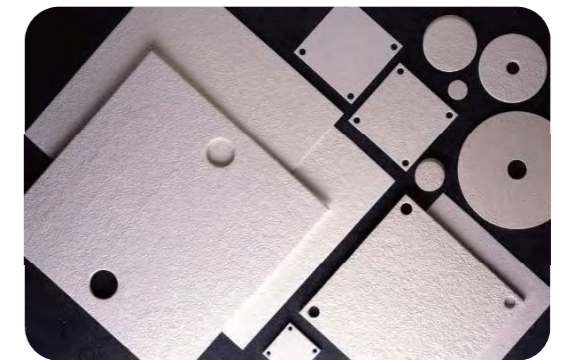
Characteristic of Cloth Material

Material	Max Operation Temp	Alkali Resistance	Acid Resistance	Ultraviolet Rays Resistance
Polypropylene	90°C	Good	Good	Bad
Polyamide	130°C	Perfect	Bad	Good
Polyester	130°C	Bad	Perfect	Good



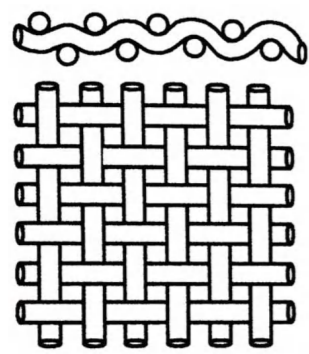
FILTER PAPER TECHNICAL PARAMETER

NAME	MODEL	WEIGHT	THICKNESS	"FILTRATION SPEED"	DRY STRENGTH	WET STRENGTH	WATER PERMEABILITY	ASH CONTENT	MOISTURE CONTENT	FILTRATION PRECISION
		(g/m ²)	(mm)	(Δ p0.03bar s.50ml.10cm ²)	(Kpa)	(Kpa)	(L/m ² ·Min@100kpa)	(%)	(%)	(μ m)
SUPPORT PAPERBOARD	XUP-107	650~850	3.6~4.0	2"~8"	\	≥ 100	18600~22300	≤ 1	≤ 7	90~111
	XUP-108	350~550	1.8~2.2	5"~20"	\	≥ 100	12900~17730	≤ 1	≤ 7	85~100
	XUP-109	635~734	2.7~3.2	5"~15"	\	≥ 150	16300~17730	≤ 1	≤ 7	95~100
	XUP-110	950~1200	3.6~4.0	30"~1'30"	\	≥ 800	8180~11300	≤ 1	≤ 7	45~60
	XUP-111	1100~1350	3.6~4.0	1'~2'	\	≥ 1000	4150~6700	≤ 1	≤ 7	40~55
	XUP-112	1000~1100	3.4~3.7	1'~1' 40"	\	≥ 900	4380~7000	≤ 1	≤ 7	40~55
	XUP-113	700~850	3.4~4.0	10" ~30"	\	≥ 350	9210~15900	≤ 1	≤ 7	65~85
	XUP-114	700~850	3.2~3.5	20" ~40"	\	≥ 350	8100~13500	≤ 1	≤ 7	60~70
	XUP-115	1000~1250	3.5~4.0	25" ~55"	\	≥ 450	7800~12700	≤ 1	≤ 7	60~70
	XUP-210	1150~1250	3.6~4.0	2' ~4'	\	≥ 800	2760~3720	≤ 1	≤ 7	15~35
	XUP-220	1250~1350	3.7~3.9	3' ~5'	\	≥ 800	508~830	≤ 1	≤ 7	10~30
	XUP-230	1300~1500	3.4~4.0	6' ~13'	\	≥ 700	573~875	≤ 1	≤ 7	6~15
	XUP-240	1400~1600	3.4~4.0	13' ~20'	\	≥ 700	275~532	≤ 1	≤ 7	3~6
	XUP-270	1500~1650	3.4~4.0	40' ~50'	\	≥ 800	70~138	≤ 1	≤ 7	0.5~0.8
FINE FILTRATION PAPERBOARD	XUP-309	1150~1250	3.4~4.0	30"~2'	≥ 550	≥ 180	425~830	28	≤ 7	10.0~20.0
	XUP-311	1150~1250	3.5~4.0	1'30"~4'	≥ 550	≥ 230	350~550	28	≤ 7	5.0~12.0
	XUP-312	1200~1300	3.6~4.0	4'~7'	≥ 550	≥ 230	200~280	35	≤ 7	3.0~6.0
	XUP-321	1300~1400	3.6~4.0	7'~10'	≥ 550	≥ 200	160~210	37.5	≤ 7	1.5~3.0
	XUP-332	1380~1500	3.6~4.0	10'~20'	≥ 550	≥ 200	99~128	49	≤ 7	0.8~1.5
	XUP-333	1480~1600	3.7~4.0	20'~30'	≥ 500	≥ 200	70~110	48	≤ 7	0.6~1.0
	XUP-334	1480~1600	3.7~4.0	30'~40'	≥ 500	≥ 200	65~88	47	≤ 7	0.5~0.8
	XUP-335	1450~1600	3.7~4.0	40'~50'	≥ 500	≥ 180	42~68	52	≤ 7	0.3~0.45
	XUP-336	1450~1600	3.8~4.0	50' ~70'	≥ 450	≥ 180	26~47	52	≤ 7	0.2~0.40
XUP-337	1450~1600	3.8~4.0	60' ~80'	≥ 450	≥ 180	21~36	52	≤ 7	0.2~0.30	
OIL FILTER PAPER	XUY-101	80±5	0.21~0.23	15"~35"	≥ 150	\	3~10	≤ 1	≤ 7	N/A
	XUY-102	80±5	0.21~0.23	10"~15"	≥ 150	40~60	10~17	≤ 1	≤ 7	N/A
	XUY-103	270±10	0.62~0.68	50" ~70"	≥ 500	\	1~5	≤ 1	≤ 7	N/A
	XUY-104	370±10	0.9~1.05	20"~50"	≥ 500	\	3~10	≤ 1	≤ 7	N/A
	XUY-106	300±10	1.0~1.2	4"~5"	≥ 130	\	30~50	≤ 1	≤ 7	N/A
	XUY-109	310±10	1.0~1.2	4"~5"	≥ 200	\	25~35	≤ 1	≤ 7	N/A
	XUY-202	120±5	0.32~0.34	10"~25"	≥ 200	\	3~10	≤ 1	≤ 7	N/A
XUY-213	270±10	0.65~0.71	15"~45"	≥ 400	\	2~9	≤ 1	≤ 7	N/A	
WATER FILTER PAPER	XUS-100	190±5	0.5~0.65	4"~10"	≥ 180	≥ 60	3~12	≤ 1	≤ 7	N/A
	XUS-101	270±10	0.65~0.7	10"~45"	≥ 550	≥ 250	3~10	≤ 1	≤ 7	N/A
	XUS-102	370±10	0.90~1.05	20"~50"	≥ 650	≥ 250	3~9	≤ 1	≤ 7	N/A
	XUS-302	160±5	0.5~0.55	7"~15"	≥ 300	130	10~20	≤ 1	≤ 7	N/A
	XUS-303	200±10	0.6~0.65	15"~30"	≥ 460	130	5~10	≤ 1	≤ 7	N/A
	XUS-304	300±10	0.9~1.0	30"~40"	≥ 370	120	3~6	≤ 1	≤ 7	N/A





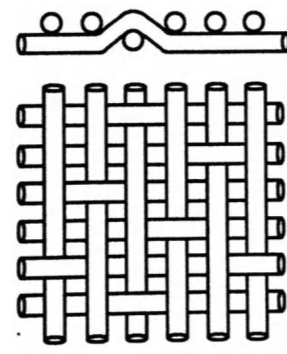
■ Weaving Method and Structure



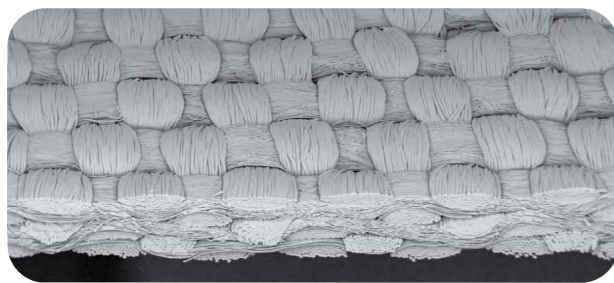
Plain



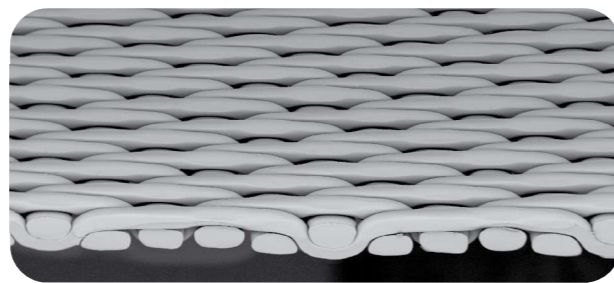
Twill



Satin

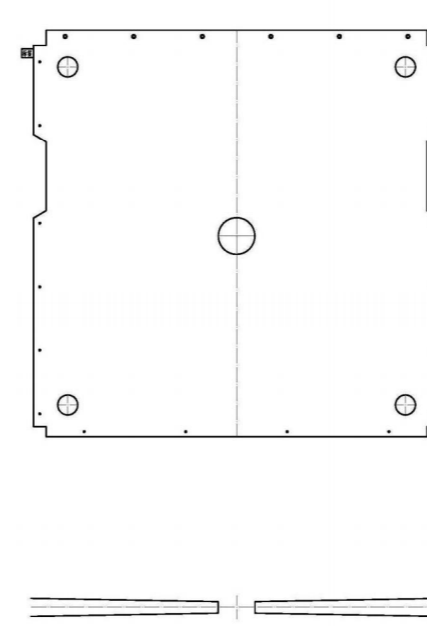


Multifilament

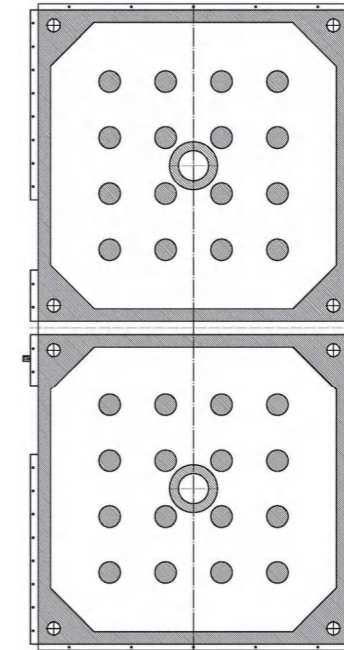


Monofilament

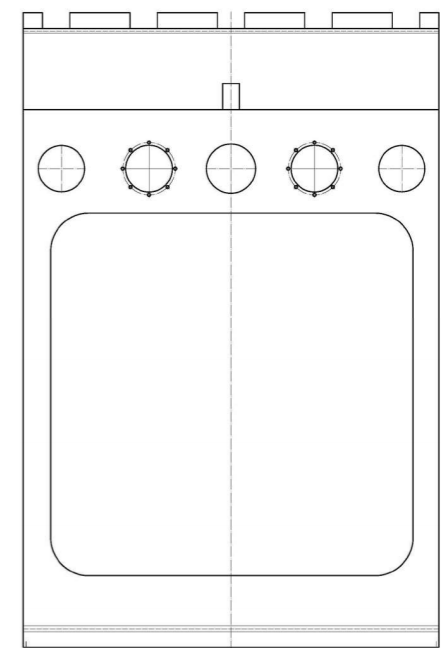
■ Installation Design of Filter Medium



Barrel Neck

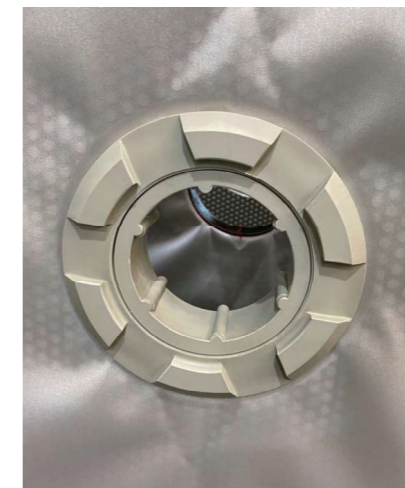
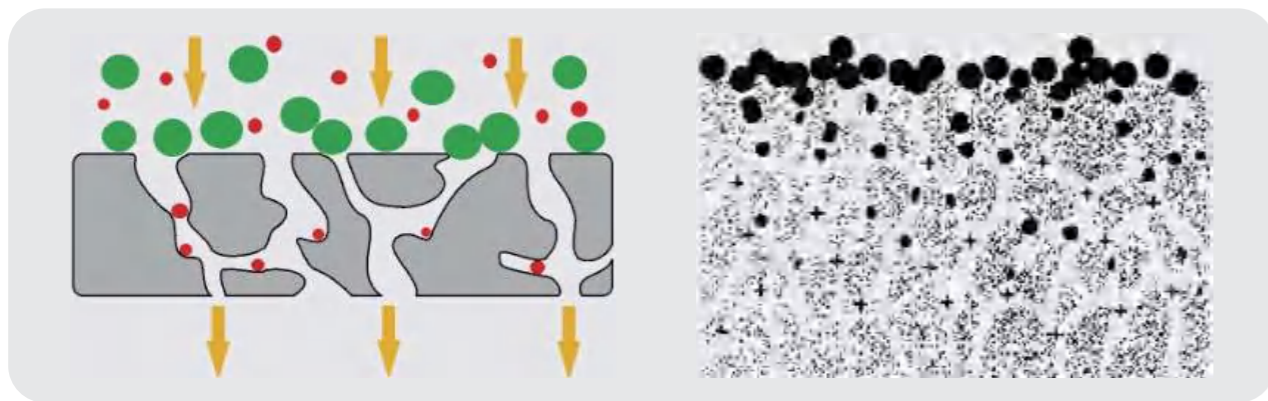


Overhang



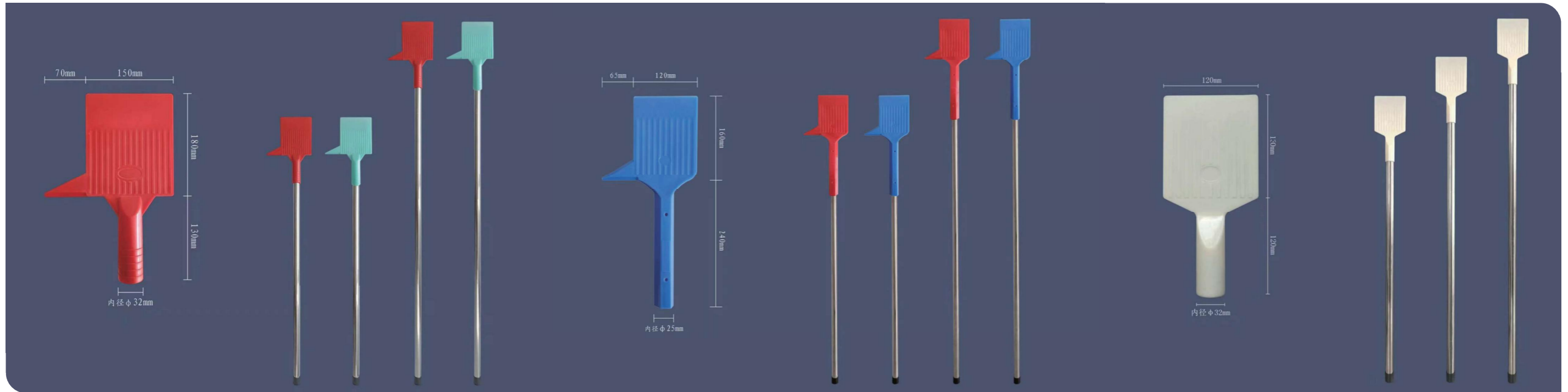
Single Piece

■ Principle of Depth Filtration



ACCESSORIES

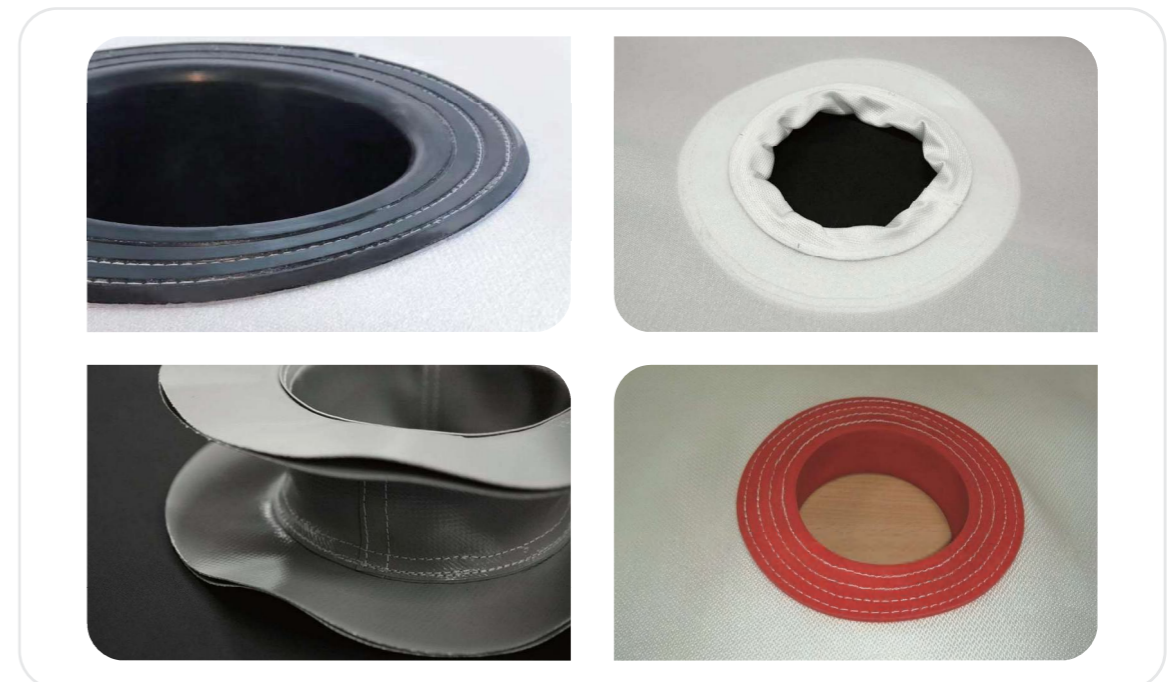
Cake Scraper



Cloth Clamping Ring



Barrel Neck





DEZHOU XUDA FILTRATION CO., LTD.

Middle Dexin Road, Tianqu Industrial Park, Decheng District,
Dezhou, Shandong P.R. China

Post Code: 253000

Tel: +86-534-2369766

Fax: +86-534-2392966

Email: inquiry@xudaenviro-tech.com

Web: www.xudafiltration.com

Represented by:

